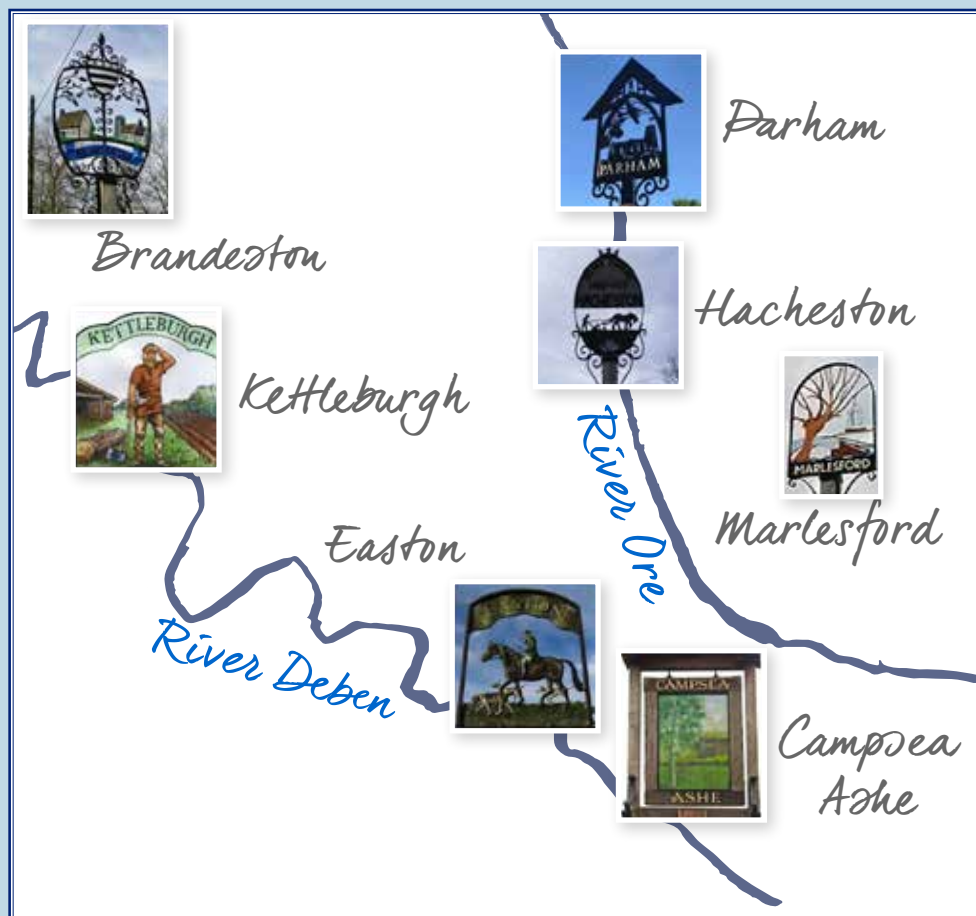


# A SLICE OF SUFFOLK



A Benefice Magazine for Deben and Ore valleys:  
Sharing news of local people and community events.

**AUGUST 2022 - Number 2**

## Who's Who ...

<b>LAY READERS:</b>	Martin Crane	07824835493
<b>ELDERS:</b>	Mary Baker	01728 685807
	Jackie Clark	01728 723623
	Jane Woodbury-Eggins	01728 746667
	John Bradfield	01728 724481
	Carol Cooke	01728 747625
	Jane Slade	01728 723707
<b>CHURCHWARDENS :</b>		
<b>Brandeston (All Saints )</b>	Mary Baker	01728 685807
	Chris McArthur	01473 737553
<b>Kettleburgh (St. Andrews)</b>	John Bater	01728 723532
<b>Easton (All Saints)</b>	Jane Woodbury-Eggins	01728 746667
<b>Easton magazine editor:</b>	Clare Owen	01728 745015
<b>Parham (St Marys)</b>	Adam Paul	01728 723760
	John Bradfield	01728 724481
<b>Organist:</b>	Graeme Hall	01728 746371
<b>Hacheston (All Saints)</b>		
<b>Marlesford (St Andrews)</b>	Lord Marlesford	
	Nan Waterfall	01728 747038
<b>Campsea Ashe (St John the Baptist)</b>		
	Glenys Fear	01728 747177
<b>TOWER CAPTAINS: CA</b>	Glenys Fear	01728 747177
<b>P</b>	Jos Slade	01728 723707
<b>B</b>	Chris McArthur	01473 737553

## **A word from the Church Elder Jane**

### **Dear All**

Last month Revd. Deirdre Parmenter wrote about how the benefice was working together to find a new Priest-in-Charge and finished with our Orebeck prayer. The prayer was written to accompany the 2019 Palm Sunday Pilgrimage and has been used regularly in services online and in our churches.

We have been a benefice since 2017, although the churches were already working together before that. Our normal service pattern means that we worship together as a benefice on the first (and fifth) Sundays of the month in each of our seven churches in rotation.

Talking to people in our villages, some seem to worry that having the Orebeck benefice threatens the individuality of our villages. It doesn't! The benefice is a sort of umbrella for the churches in our seven villages because we share one post for a Priest-in-Charge.

None of our parishes can afford a priest of their own so the only way we can have an incumbent is to share one. The annual cost of a priest is about £68,800. That is not what they earn! The cost includes salaries, training, pensions, housing and other administrative costs. Even between all the seven parishes we cannot afford a full-time priest so will be looking for a part time post of four or five days a week (including Sundays, of course).

To advertise the post, all the parishes have submitted a profile of their church and village, and this has been amalgamated with what we would like to see in the future, general details of the area, the Diocese etc. The next step is for the Archdeacon and Bishops to approve the application and then it will be advertised.


Recently the opportunity came to amalgamate the parish magazines into one benefice magazine. We are grateful to Jan Baldwin for taking on this task. We hope you enjoy the new look!


Blessings and best wishes.

*Jane Woodbury-Eggins*



## Church Services for August

<b>7th</b>	<b>Trinity 8</b>	<b>9.30am</b>	<b>Benefice Holy Communion (CW)</b>	<b>Marlesford</b>
<b>14<sup>th</sup></b>	<b>Trinity 9</b>	9.30am	Morning worship	Brandeston
		11am	Morning Prayer	Easton
		11am	Morning Prayer	Hacheston
		11am	Holy Communion	Parham
		6.30pm	Evening Prayer	Marlesford
<b>21<sup>st</sup></b> 	<b>Trinity 10</b>	9.30am	Holiday Club service	Brandeston
		11am	Morning Worship	Kettleburgh
		11am	Morning Prayer	Parham
<b>28<sup>th</sup></b>	<b>Trinity 11</b>	9.30am	Morning Worship	Brandeston
		9.30am	Morning Worship	Campsea Ashe
		11am	Holy Communion	Easton
		11am	Morning Prayer	Parham
		6.30pm	Evening Prayer	Kettleburgh

 On 21<sup>st</sup> August there will be no communion service in the benefice. If you wish to attend a communion service, you will be very welcome at St Michael's Framlingham at 8.00am or 9.30am.

Friday Prayers. Everyone is welcome – 4pm at Marlesford

Compline is said at Marlesford every Wednesday at 5pm

## Church News and Events

# Suffolk Churches Ride and Stride



Suffolk  
Historic  
Churches  
Trust

**Saturday,  
10 September 2022  
9.00am - 5.00pm**

Local Organiser  
from whom sponsorship  
forms are available:



**Visit [shct.org.uk](http://shct.org.uk) for more information.**

**You can also find us on Facebook and Twitter.**

Sponsorship money raised will be divided between Suffolk Historic Churches Trust  
and the church or chapel chosen by the participant.

Suffolk Historic Churches Trust

Registered Charity No: 267047



## Church Information

### Bellringing

**Ringers of all standards and newcomers are welcome.**

**Brandeston:** Christopher McArthur - Tower Captain Tel: 07887 825008

**Kettleburgh:** Persephone Booth – Tower Captain Tel: 01728 723502

We both have had safeguarding training in respect of these matters, and I have been certified as a competent teacher.

**Parham:** Jos Slade the Bell Tower Captain runs practices at Parham, on Tuesday evenings. Tel: 723707

**Campsea Ashe:** Saturdays from 9.30 to 10.45 with Bell Tower Captain Glenys Fear Tel: 747177

### Pastoral care during the vacancy

If you need to talk to someone about a pastoral issue over the coming months please contact either:

The Rev'd Canon Deirdre Parmenter

01728 748145

[deirdreparmenter@gmail.com](mailto:deirdreparmenter@gmail.com) or

The Rural Dean, the Rev'd Chris Davey

01728 723454

[framlinghamrectory@btinternet.com](mailto:framlinghamrectory@btinternet.com)



## Church Rotas

### All Saints Church, Brandeston Church Cleaning Rota Summer 2022

<b>Sue and Barry Flack</b>	<b>14<sup>th</sup> August 2022</b>
<b>Maida Campbell/Liz Cobbold</b>	<b>28<sup>th</sup> August 2022</b>
<b>Julia Elson / Kelly Jeffery</b>	<b>11<sup>th</sup> September 2022</b>
<b>Lydia Freeman</b>	<b>25<sup>th</sup> September 2022</b>

Thank you all for your continuing commitment to keep our lovely church looking so clean and welcoming. Kelly Jeffery (01728) 685117

### Kettleburgh Church Cleaning and Flowers Summer 2022

	<b>Cleaning</b>	<b>Flowers</b>
<b>August</b>	<b>Val &amp; Trevor Butcher</b>	<b>Sue Scott</b>
<b>September</b>	<b>Anne &amp; John Bater</b>	<b>Anne Bater</b>

Thank you to all those who have offered to keep St Andrew's church clean and provided with flowers.

### Parham and Hacheston Church Flower Rota Summer 2022

<b>Aug/Sept 2022</b>	<b>Parham</b>	<b>Aug/Sept 2022</b>	<b>Hacheston</b>
<b>6/8</b>	<b>Sheila Winton</b>	<b>7/8</b>	<b>Kaye Dawe</b>
<b>13/8</b>	<b>Myrle Gray</b>	<b>14/8</b>	<b>Kaye Dawe</b>
<b>20/8</b>	<b>Kath Kindred</b>	<b>21/8</b>	<b>Kaye Dawe</b>
<b>27/8</b>	<b>Jane Slade</b>	<b>28/8</b>	<b>Kaye Dawe</b>
<b>3/9</b>	<b>Shirley Page</b>	<b>4/9</b>	<b>S MacKenzie</b>
<b>10/9</b>	<b>Sue Paul</b>	<b>11/9</b>	<b>S MacKenzie</b>
<b>17/9</b>	<b>Julie Inett</b>	<b>18/9</b>	<b>S MacKenzie</b>

## From the Editorial Team

Thank you all interested parties for your feedback on the new Orebeck Benefice/Community magazine. It seems that the magazine has been received positively, which is great. Thank you. My apologies for omitting the Marlesford village sign in our first issue, there was bound to be a mistake or two ... but, on the front page? Tut, tut. Anyway, it's now on the front cover along with all the other village signs.

The magazine is now available online in Brandeston, Kettleburgh and Easton. We are currently working towards putting the parish magazine onto all our seven village websites and onto the website 'A CHURCH NEAR YOU'. Ultimately these sites will be where those currently receiving an email copy will be able to find the latest issue. **We wonder if there is anyone in Hacheston and Parham who would be willing to upload the magazine onto those village websites? If so, please contact Jan or Nan.**

The vision is for the magazine to be received and read mostly online which will make it free. Some people will still want a printed copy, and we are pleased to say that this will be available in colour because we supply the printers with the artwork 'camera ready' which has kept the cost down. The cost of a printed copy will be reviewed at the beginning of 2023. Jan

### **A BIG THANK YOU TO PATRICK AND FIONA DAWE**

#### **Have you ever wondered how the magazines gets to you?**

It's thanks to the very hard work of Patrick and Fiona Dawe.

Each month the printers drop all the copies off at their home in Campsea Ashe, and Patrick and Fiona count them all before putting them into bundles for each parish. They have a database that prints out all the labels which they then put round each bundle, fastening the paper strips they have cut to hold the magazines in place.

Then it's out to the car to deliver the bundles to the distributors in each village, a round-trip of 17+ miles. They have been doing this every month for years. Patrick and Fiona's contribution is unseen, but **we couldn't do without them!**

At the end of June, they were on holiday, visiting family in Geneva, so I did their job for the month. Before they left they invited me round to their home, fed me tea and cake, gave me a jar of the scrumptious honey from their beehives, and explained the system, finally driving me round the route. So all mistakes last month were mine alone. Thank you so much, both of you. You are valued part of the magazine team. Nan



# Brandeston



## Brandeston 100+ Club July Results

1st prize: Will and Julia Elson

2<sup>nd</sup> prize: Keith Goodchild

**Brandeston Village Hall**  
**Coffee Morning, Thursdays**

**10am - 12pm.**



***The Brandeston Film Club will be taking a break in August and will return in September.***

Primary age children are invited to this year's holiday club,  
run by our local churches at Brandeston Village Hall  
on August 15<sup>th</sup> 16<sup>th</sup> 17<sup>th</sup>  
THE THEME FOR THIS YEAR IS

**HEROES!**

9:30am to 1:30pm  
Bring a picnic lunch

£4 per day for first child / £2.50 per day for additional  
siblings

You are welcome to come for 1, 2 or 3 days  
Please contact

Jackie Clark 01728 723623  
Mary Baker 01728 685807

[jwcs1@btinternet.com](mailto:jwcs1@btinternet.com)  
[marybakers55@hotmail.co.uk](mailto:marybakers55@hotmail.co.uk)

# Brandeston



## BRANDESTON VILLAGE FETE



SATURDAY 3<sup>RD</sup> SEPTEMBER 2022

2 - 4pm

### THE QUEEN BRANDESTON

Gorgeous Teas & Cakes-Brocante-Produce-Fresh Flowers

Daft Dog Show-Games-Raffle and much more!



All proceeds are shared between the Brandeston Village Hall and  
Brandeston All Saints Church.

We would be most grateful for any of the following produce you can donate for our Plant and Produce stall at the FETE:

Fruit or vegetables, home-made chutneys or jams, split and potted-up plants, seeds collected from your favourite flowers in labelled envelopes.

The week before the Fete, we will put out a reminder asking if you could drop off any of your produce or potted donations to:

Jan Baldwin: Tel: 01728 684030

Marion Kirton: Tel: 01728 684405 Thank you .

# Kettleburgh



## Kettleburgh Green Trust Lottery Draws

**July** - 1st Prize: Sue & Denis Brooks

2nd Prize: Nora & Louise

**"The organisers of Kettleburgh Village Flower and Produce Show very much regret that we have decided not to proceed this year. We hope to see you all on Saturday 2nd September 2023. Add the date to your diary now."**

**Thank you, Claire**

## KETTLEBURGH

☕ **COFFEE** ☕

## MORNINGS

**are back!**

**10:30-12noon**

**1st Fridays**



# Easton



## Easton Open Gardens

Thank you to all the people who came and supported our Open Gardens. The final total was **£3,593** which included a very generous donation. The church received £3,000 and Red Cross Ukraine £593.

Visitors seemed to enjoy being out and about and seeing the very differing gardens. Sincere thanks to the organisers, the refreshment team and those who opened their gardens.

## August is holiday season

Many of our activities are taking a well-earned break in August but will be back in September!



## Taizé services

These are due to restart on 4th September at Brandeston church at 4 pm.

***Jane***

# Parham



## **Parham Village Hall**

If you'd like to book our main hall, meeting room or games room, please contact Ellie on [parhamhallbookings@gmail.com](mailto:parhamhallbookings@gmail.com) or 07794069233 for more information.

### **Our facilities...**

#### **Main Hall**

- Large main hall
- Stage Area
- Kitchen area (with serving hatch)
- Access to tables and chairs

#### **Meeting Room**

- Spacious meeting room
- Access to tables and chairs

#### **Games room**

- 2 full size snooker tables
- Pool table
- Table football
- Air hockey
- Darts

If you'd like to book any of our rooms, please use the contact details above.

**We look forward to welcoming you to the Village Hall very soon!**

# Hacheston



## All Saints Hacheston News

About 40 people assembled, on July 3<sup>rd</sup>, to hear The Goldcrest Ensemble who played some delightful music for a summer afternoon. £295 was sent to SHCT.

The SHCT Ride and Stride falls on Saturday 10<sup>th</sup> September, if anyone would like to sponsor or accompany me to "Stride" out from Brandeston across the Orebeck Benefice please get in touch. Posters about this will, no doubt, begin to sprout out across the area in the next few weeks.

Now that I have moved away from the village I am looking for people willing to help with keeping our lovely old village church and churchyard in a good and safe condition. Both have served the community faithfully for hundreds of years and have recorded many life events for the inhabitants of Hacheston. It would be a shame to see them shut or fall into rack and ruin. I wonder if there is anyone out there willing to join me with some occasional up-keep?

**Kaye Dawe mob: 07510 612672 or Tel: 01473 620353**

.....



**Hacheston Hall** is now open for hire again – both the main hall and committee room.

**Mondays** 6.00 -7.30 Yoga Jo Ogden-King 07855 755982 [jokingy@hotmail.com](mailto:jokingy@hotmail.com)

**Tuesdays** 8.30 – 3.30 NHS Cardio Rehab 4.00 – 5.15; 5.15 – 6.00; 6.00 – 7.00 Ballet. Anna admin@arschoolofdance.com

**Wednesdays** 2.00 – 2.30; 4.00 – 5.00; 5.00 – 6.00; 6.00 – 7.00 Ballet. Anna 07740 769742

**Thursdays** 10.00 – 12.00 Art Club. Lorna Edwards lornaed@hotmail.com  
4.45 – 8.15 Karate. Elizabeth Arvanitidou 07495 608475 [earvan120@gmail.com](mailto:earvan120@gmail.com)

**Fridays** 8.30 – 1.00 Cardio rehab with Jon Regester [info@jonregester.co.uk](mailto:info@jonregester.co.uk)

# Marlesford



**In Marlesford**, over the Jubilee weekend we enjoyed a Concert on the Friday evening which started with canapés and bubbly. Sunday morning, a service of celebration and thanksgiving followed by a Bring and Share Community Lunch at which over 80 people came together to eat a sumptuous variety of sweet and savoury food. The Church was beautifully decorated with flowers and there were 14 posies placed on the Altar from children in the village. The Parish Council gave every young person in the village a commemorative mug and everyone at the lunch received a free drink. None of this could have happened without the hard work of Andrew for putting the concert together, Sue Wilson and her group of flower arrangers and Nan, Di., Robert and their many helpers for co-ordinating the weekend.



## **Marlesford Bakers update for August**

So far this year the cake sale has raised over **£600** for our church in Marlesford. Carol and I thank all our loyal customers for their support this year. Unfortunately, there will not be a cake sale in August, because we bakers have a number of social events during the month, and we can't find a free weekend. However, it won't be too long before you will be able to buy some of our delicious cakes as there will be some at the **MARLEFORD Fete on September 3<sup>rd</sup> from 2.00pm at 'The Firs.'**



# Marlesford



## MARLESFORD FÊTE

SATURDAY 3rd SEPTEMBER

2.00 - 4.30pm

THE FIRS, CHURCH RD,  
MARLESFORD IP13 0AT

BY KIND PERMISSION OF PAUL AND LESLEY BENSLEY

BOOKS  
&  
TOYS

LIVE MUSIC

AUCTION OF PROMISES

CHILDREN'S  
GAMES

TOMBOLA CAKES

WHITE ELEPHANT

RAFFLE

COMPOST  
CORNER &  
PLANTS

TEAS

WITH GORGEOUS CAKES

ALL THE FUN OF A TRADITIONAL FETE  
AFTERNOON

IF YOU'RE NOT IN, YOU WON'T WIN



Campsea Ashe



# **ASHE PARK**

## **OPEN GARDENS**



**Ivy Lodge Road**  
**Campsea Ashe**



**SATURDAY 13<sup>TH</sup> AUGUST**

**1pm to 5pm**



**Bring & Buy Plant Stall**

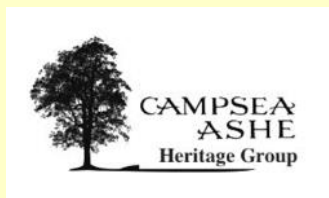


**TEAS**

**Entry £5 per person (cash only) Children free.**

**In aid of Campsea Ashe Church Tower Repair Fund**

# Campsea Ashe



## Campsea Ashe Heritage Archives

[www.campseaashechurch.org.uk](http://www.campseaashechurch.org.uk)  
[www.facebook.com/campseaasheheritagegroup](https://www.facebook.com/campseaasheheritagegroup)

The Campsea Ashe Heritage Group was set up by the Church PCC in 2010 and since then it has collated a wide range of archives that help tell the story of what has happened in our village over the centuries. As well as being custodians of many different archives, the Group has also tried to research aspects of the village and so the collection of archives has grown over the years. There are many different themes to the archives including items about the people of the village, the buildings of the village, the Church, the railway and many other aspects of village life.

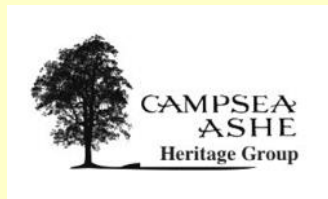
One of the aims of the Group is to make the archives as widely available as possible so where can they be found? There are two main locations where people can see the archives. Firstly, visitors to the Church will have seen the Heritage corner which houses many folders full of relevant information. Copies of the censuses for the village can be seen here, for example. Secondly, most of the archives are freely available on the Church and Heritage website, address above. So, if you want to know anything about the Church or the wider village, this is the place to go.

Campsea Ashe Church  
and Heritage



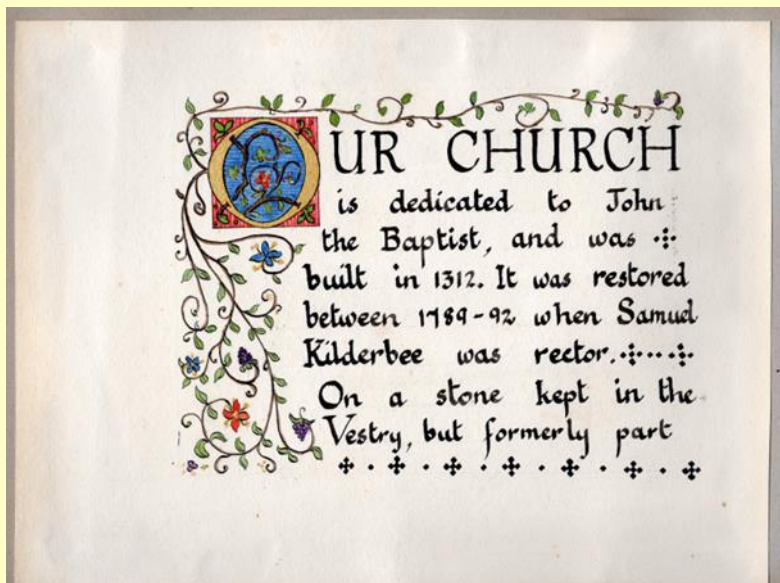
Home Church Church Bells Heritage Newspapers People Village buildings Village at war Photo galleries Young Explorers About our Village

# Campsea Ashe



Finally, it is not possible to put some original archives on public display, but where possible they have been scanned and are available on the website. The early 20th century book *Notes on Campsea Ashe* by the Rev Lucas and the beautiful album of the Church by Edna Copping (right) are both worth looking at, for example.

For more information about the Heritage Group contact us on [campseaheritage@gmail.com](mailto:campseaheritage@gmail.com)



# Campsea Ashe



For freshening up in the morning, calming down later, grabbing a bite and relaxing on your own or with friends. We serve quality coffee roasted in Suffolk with a great taste whether you fancy a cappuccino, latte, espresso, americano, flat white or filter. If decaffeinated or dairy-free is your choice, we have it covered. Or pick yourself up with a refreshing tea (Kandula Tea Company): English Breakfast, Earl Grey, Green Ceylon, Strawberry Hibiscus, Lemon Ginger, Moroccan Mint or Chamomile Rose. Then add a local bacon roll, croissant, pain au chocolat or selection of home-made cakes from our kitchen plus a selection of cold drinks and grab 'n go snacks.



Station Rd, Campsea Ashe, Woodbridge  
IP13 0PT  
Tel: 07856810828  
[http://stationhousecampseaa Ashe.co.uk/  
bookaspace](http://stationhousecampseaa Ashe.co.uk/bookaspace)



## Opening Times

Mon-Fri	7:30am-4:00pm	7:00pm when room in use
Saturday	8:00am-4:00pm	7:00pm when room in use
Sunday	8:00am-4:00pm	



## DR DAN POULTER MP

Member of Parliament for Central Suffolk and North Ipswich

I am often asked what the best part of my working week is as an MP. Without a doubt, it is the return journey home from Parliament to Suffolk and spending Fridays and weekends amongst the many communities that I represent.

One of the many great things about Suffolk is the community spirit, and we saw that in abundance at this year's Suffolk Show. After two years absence due to the pandemic, this year's event provided the perfect platform to showcase Suffolk's fantastic farming sector and our outstanding local producers. Our countryside is part of what makes Suffolk so special, and it was fantastic to see everyone back out and celebrating our great county.

It was also a delight to see so many towns and parishes across the county come together in celebration of Suffolk and the once in a lifetime Platinum Jubilee. The Queen's record of public service is second to none. The Queen is the very best example of 'service above self', which is a quality that we were able to celebrate during the Jubilee as Suffolk's community heroes were thanked and recognised.

I was delighted to join a myriad of events ranging from a tree planting ceremony to a dog show. I want to give special thanks to the hardworking parish councils, village hall committees and event committees. Events such as these take months to organise, with many people working tirelessly behind the scenes to make them a success. The festivities came together seamlessly, and we should all be very proud of the spectacular events that were put together for all to enjoy.

Thank you to everyone who took part – it was the very best of Suffolk, leading into another bumper Suffolk Day on 21<sup>st</sup> June. We truly are lucky to live in such a special county!

## BRICK KILN ACCOMMODATION

Brick Kiln, Campsea Ashe, Suffolk. IP13 0QL

For full details and booking, see our  
website [www.brickkilnfarmsuffolk.co.uk](http://www.brickkilnfarmsuffolk.co.uk)

A warm welcome awaits you at Brick Kiln Farm Accommodation, (**18+ only**) with the choice of Self-Catering and/Camping or a combination of both! Quiet, country location with a 10-minute walk across the fields to the village; Campsea Ashe Shop and The Duck Pub.

Easy access to A12 and Wickham Market Railway Station

### **SELF-CATERING (18+)**

#### **Open All Year Round**

Self-contained studio with fully equipped kitchen, en-suite bedroom. All bedding and towels included. TV & wi-fi. Own entrance with outside patio/seating area. Allocated parking.

***(Sorry! No Pets Allowed in Self-Catering.)***

### **CAMPING (18+)**

#### **Open from Easter to end September**

Small and friendly campsite. One-acre flat field with high hedges. Fire pit available for each pitch. Wood to be purchased on site. Loos, hot showers and kitchen. Undercover seating area and table tennis. Peaceful countryside. Tents; Motorhomes & Campervans all welcome., also dogs.

Enquiries can be made via email [brickkilnfarm@gmail.com](mailto:brickkilnfarm@gmail.com) and/or phone  
Tina on **077724 210862**

### **TC BUILDING AND CARPENTRY**

EXTENSIONS, REPAIRS, ALTERATIONS, ROOFING,  
LANDSCAPING, PATIOS, GARDEN BUILDINGS/OFFICES

**CALL TOM 0774 672 1538**

[TC.BUILDING.CARPENTRY@GMAIL.COM](mailto:TC.BUILDING.CARPENTRY@GMAIL.COM)

### **JPF TREE SERVICES**

Local, Friendly Reliable and with 15 years  
of experience. Based in Dennington,  
nr Framlingham

- Tree felling
- Pruning
- Hedge Cutting
- Garden Clearance
- Fencing
- Small Landscaping Projects
- Competitive Fixed-price Prices all year round

To speak with Jack

Telephone: **07772 330351**

Email: [jpfreeservices@outlook.com](mailto:jpfreeservices@outlook.com)

**You can advertise**

**Your business**

**HERE**

**Please contact**

**Mrs Nan Waterfall**

**Tel: 01728 747038**

**Email:**

**[nanwaterfall@gmail.com](mailto:nanwaterfall@gmail.com)**

**DRIMALOST**  
PAVING & LANDSCAPE MASONRY

Contact Patrick Meehan:  
t. 01728 747835 m. 07919 156150  
e. patrick@drimalost.co.uk

**drimalost.co.uk**  
THE GUILD OF MASTER CRAFTSMEN  
corporate member

the old granary, hall road, marlesford, woodbridge, suffolk, IP13 6AX

**GARNETTS GARDENS HACHESTON**  
Garden Centre, Farm Shop, Café

Open Tues - Sat 8.30-5.00  
Sun 10.00-4.00  
Closed Monday

**Inside seating is now available.**  
Café now baking and serving our own fruit and  
cheese scones and cakes and serving hot/cold drinks  
[www.garnettsgardens.co.uk](http://www.garnettsgardens.co.uk)  
Tel 01728 724589

**E.B. Button &  
Sons Ltd**  
Funeral Service  
24 St. John's Street,  
Woodbridge, IP12 1EB  
Telephone: 01394 382160  
Email: [info@ebbutton.co.uk](mailto:info@ebbutton.co.uk)

**PAMPERED PETS HOTEL  
& Grooming Parlour**  
*Luxury accommodation*  
*Contact us for information about  
rescue dogs*

GREENACRES, GLEVERING, HACHESTON,  
WOODBRIDGE, SUFFOLK, IP13 0EX.  
Tel: 01728 747760, [www.pamperedpets.co.uk](http://www.pamperedpets.co.uk)

**BOTANICA**  
NURSERY & ARBORETUM

**JOB OPPORTUNITIES**  
We have a variety of new positions

- Landscapers
- Nursery team
- Admin roles
- Leadership & Management positions

Join our friendly team and talented team  
working in the beautiful Suffolk countryside.  
*Please see our website for further details*  
[www.botanicaplantnursery.co.uk](http://www.botanicaplantnursery.co.uk)  
Botanica, Campsea Ashe, Woodbridge,  
Suffolk IP13 0PZ

**CROW  
HANDYWORX**

- General Maintenance Work •
- Bespoke Furniture Made From Reclaimed Materials •

Joe - 07534809001  
Instagram - @crowhandywork

**HETAS** REGISTERED  
**THE SUFFOLK SWEEP**  
- No. 1 for chimney care -

Chimney sweeping	Stove refurbishment
Cowl fitting	Smoke tests
Camera inspections	Certificates issued

Please call Ben on 07766 235607  
[www.thesuffolkssweep.co.uk](http://www.thesuffolkssweep.co.uk)



**Which?**  
Trusted trader

# Bayfields

DIGITAL TV, WIFI AND SECURITY SOLUTIONS

**cai**  
Association For  
Audio Visual Professionals  
Member C748



## Local, expert help with TV, WiFi & home/business Security!

- New TV Aerials and Satellite Dishes
- Experts in Freeview, YouView, Freesat and Sky
- Reception improvements and storm damage repairs
- Extra points and complete TV distribution systems
- Setting up of Smart TV's and devices
- WiFi troubleshooting and coverage improvements
- Wireless Internet links to annexes and garden offices
- CCTV video camera systems for home and business
- Ajax smart wireless intruder alarm systems

Freeview

Freesat

alhua  
TECHNOLOGY

AJAX  
WIRELESS ALARMS

UBIQUITI  
NETWORKS

**Call us on 01728 745745 - Monday to Friday 8.30am to 4pm**  
**Or visit our website at [www.bayfieldsdigital.com](http://www.bayfieldsdigital.com)**

**Bayfields Digital, Unit 9 Riverside View, Wickham Market, Woodbridge, Suffolk. IP13 0TA**  
A family business, established in Suffolk since 1976



## FRAMBROADBAND

East Anglian Community Broadband Provider

No  
telephone  
line  
required!

## FAST BROADBAND

Wirelessly beamed out to you via

Hacheston Church, Marlesford Church  
and Campsea Ashe Church

**5Mb and 10Mb services available**

Request a FREE survey to check you can  
receive the service at your location.

Installation cost of £200

Monthly cost from £20/month

Residential and Business  
packages available

Contact **Keira** on 01728 726507  
or email [info@fram broadband.com](mailto:info@fram broadband.com)

We are based in Framlingham  
Technology Centre.

30 day contract

Friendly local support

A great alternative to fixed line  
services if your existing service is  
slow [www.frambroadband.com](http://www.frambroadband.com)

**CALL US TODAY ON: 01728 726507**



## Marks Maintenance

All types of house & garden  
maintenance undertaken

Phone Home: (01728) 621341

Mobile: 07887 925507

E-mail:

MarksMaintenance@hotmail.co.uk  
www.marks-maintenance.weebly.com

## THE VILLAGE SHOP CAMPSEA ASHE

For all your Daily needs

Newspapers, Magazines, Bread, Cakes

Fruit and Veg. Delivered Daily

Chilled & Frozen Food

Fully Licensed

**MONTHLY SPECIALS**

**01728 747783**

## FRAMLINGHAM PHYSIOTHERAPY PRACTICE

Mrs L Patrick,

Chartered Physiotherapist

Catherine House, 22 Well Close Square,  
Framlingham, IP13 9DS.

Tel: 07770 923873 or 01728 723295

For the treatment of back,  
neck & sciatica problems; sports injuries;  
joint, muscle & ligament strains;  
work related pains; early arthritis.

**martin browne**

**landscape construction**

**07876 340 553 01728 720115**

- hard landscaping projects
- garden design consultation
- timber buildings & structures
- fencing & paving
- drainage & groundworks

[martinthelandscaper.co.uk](http://martinthelandscaper.co.uk)

## The Old Rectory

in Campsea Ashe

**Bed & Breakfast**



Please visit our website for details

**[www.oldrectorybb.com](http://www.oldrectorybb.com)**

Perfect for short stays in Suffolk

## Parham Village Hall

Available for Hire

With Full Central Heating,

Bar, Kitchen, Stage,

Function Room with Wi-Fi,

Disabled Facilities

and ample Parking.

Contact Ellie on 07794 069233  
or [parhamhallbookings@gmail.com](mailto:parhamhallbookings@gmail.com)  
for rates and availability.

## MARK RUNNACLES GARDEN SERVICES

RENDHAM

**01728 663354**

Mobile:

**07930 407771**

Hedge Cutting, Fencing,  
Grass Cutting, Turfing, Patios  
and all Garden Maintenance.

Regular contracts undertaken

### **NEED HELP WITH YOUR GARDEN?**

Hedgecutting, lawncare

Strimming, leaf clearing

Weeding, planting, potting

Established over 25 years

References available if required

**Call Alistair Brooks 01728 724332**

Framlingham

**TAXI**

Service

12 Fore St.,  
Framlingham,  
IP13 9DY

Tel: 01728 724799

Mob: 07768 561654

geraldgrady@gmail.com

**GERRY GRADY** *Proprietor*

Long & Short Journeys,

Free Quotes, Fully Insured, Registered with

Suffolk C.D.C., Parcel delivery service,

Waiting room facilities.

### **MOORE BROS.**

Independent FUNERAL DIRECTORS

24 hour service

C.S. Moore Dip. F.D.

I.R. Moore Dip. F.D.

5 Woodbridge Road, Framlingham,

Woodbridge, Suffolk IP13 9LL

Telephone: 01728 723448

Fax: 01728 723047



### **Hacheston Village Hall**

New village hall with modern conveniences including a well-appointed kitchen, meeting room, bar, underfloor heating, large car park adjacent to playing field and play area. Suitable for private hire from wedding receptions to small meetings. Many regular activities - more are welcome. Modest hire charges.

Contact Lizi Reynolds 07772 354492.

hachestonvillagehall@yahoo.com

## **Mark Watling**

### **Garden Machinery Specialist**

**Servicing and Repairs to all  
makes and models of  
Garden Machinery**

**07399 623745**

## MARLESFORD MILL

10,000sq ft of antiques, art, collectables, and decorative furnishings for the home and garden

Local delivery included in the price of larger items.

Monday – Saturday, 10.00am – 5.00pm  
Sundays and Bank Holiday 10.00am – 3.00pm

[www.marlesfordmill.co.uk](http://www.marlesfordmill.co.uk) [info@marlesfordmill.co.uk](mailto:info@marlesfordmill.co.uk)

Tel: 01728 748076

### A.C. Mutimer Ltd. *The Garage, Hacheston*

CLASS I, II & IV MOT TESTING

**Servicing & Repairs**

**Diagnostics**

**Air Conditioning**

**Tyres & Exhausts**

*Courtesy Cars available*

**01728 747534**

the  
**Good Garage Scheme** 

MEMBER  
[www.goodgaragescheme.com](http://www.goodgaragescheme.com)



### MARLESFORD ESTATE

Unfurnished residential properties in the beautiful Marlesford Conservation Area to let on Assured Shorthold Tenancies at rents from £700 per month.

*Also* Workshop space on Parham Airfield.  
Grazing land to rent with D.I.Y. stabling.

**Estate Office, Marlesford Hall.**

**Tel: 01728 746993**

### THE LOG HOUSE CO. LTD.

**Manufacturers of traditional  
Log Houses & Garden Buildings**  
*Home & Garden Building Design & Maintenance,  
Home Improvements, Repairs & Renewals,  
Tree Removal & Log Work, General Contracts*

**Mike Balls**

(Parham) 720138

or mobile

**07748 683271**

**[www.theloghouse.co.uk](http://www.theloghouse.co.uk)**



## Kingsley Healthcare's Luxury Care Home Serving Your Local Community

- ✓ 53 spacious bedroom suites
- ✓ Beautiful interior design
- ✓ Spacious lounges and dining rooms
- ✓ Family room/Private dining facilities
- ✓ Farm/Smallholding
- ✓ Beautifully landscaped garden



Call us today to book a visit. **01728 363 561**

**W:** [allonsfieldhouse.care](mailto:allonsfieldhouse.care) **E:** [allonsfield.manager@kingsleyhealthcare.co.uk](mailto:allonsfield.manager@kingsleyhealthcare.co.uk)

Church Farm, Campsea Ashe, Woodbridge, Suffolk, IP13 0PX



## Auctions

**Clarke & Simpson**

Expert valuers available six days a week at our Campsea Ashe Auction Centre or on-site by appointment

Office  
Sale Room 2

*Need a valuation for sale  
or other purpose?  
Let us point you in the  
right direction...*

Tea Rooms

Sale Room 5

Framlingham

Clarke & Simpson

Clarke & Simpson Auctions, Campsea Ashe, Suffolk  
[www.clarkeandsimpson.co.uk](http://www.clarkeandsimpson.co.uk) | 01728 746323



# VICTORIA BRADFIELD

BEAUTY THERAPIST AND MAKE-UP ARTIST



Facials • Massage • Make-up • Waxing  
Spray Tanning • Reflexology • Lash Extensions  
Microdermabrasion • Manicures & Pedicures



CRYSTALCLEAR  
SKINCARE



Suffolk's Leading Mobile Beauty Therapist and Make-up Artist  
Enjoy high-end beauty treatments in the comfort of your own home

M 07775 662725 [www.victoriabradfield.co.uk](http://www.victoriabradfield.co.uk)



When contacting our advertisers please could you tell them  
where you saw their advert. Thank you.



# Community Information



## Suffolk Mobile Library Service in our Community

<https://www.suffolklibraries.co.uk/visit/mobile-libraries>

<tel:01473351249>

Route 2 - Every 4 weeks on a Wednesday		
Stops	Time	Date
2H Parham Notice board	14:45 - 15:00	Aug 17 <sup>th</sup> Sept 14 <sup>th</sup> Oct 12 <sup>th</sup> Nov 9 <sup>th</sup> Dec 7 <sup>th</sup>
2 I Parham Northern Green	15:05 – 15:30	
Route 6- Every 4 weeks on a Wednesday		
6D Campsea Ashe Station	11:00 – 11:45	Aug 24 <sup>th</sup> Sept 21 <sup>st</sup> Oct 19 <sup>th</sup> Nov 16 <sup>th</sup> Dec 14 <sup>th</sup>
6E Hacheston Village Hall	11:45 -12:10	
6F Easton Farm Park	12:25 -12:45	
6H Marlesford Post Box	14:25 – 14:45	
Route 7 – Every 4 weeks on a Thursday		
7I Brandeston The Queen Pub	14:50 – 15:10	Aug 25 <sup>th</sup> Sept 22 <sup>nd</sup> Oct 20 <sup>th</sup> Nov 17 <sup>th</sup> Dec 15 <sup>th</sup>
7J Kettleburgh Church Road	15:15 – 15:30	

# Advertisements

## Advertising rates from July 2022

Size	One month	Three months	Six months	One full year
Eighth page	£4	£11	£20	£35
Quarter page	£8	£22	£40	£70
Half page	£16	£40	£75	£140

**Colour may be added at a supplement of 25%.**

**Deadline date: If you have an article for the September 2022 magazine, please send to it to me by email:**

**[janebaldwin325@gmail.com](mailto:janebaldwin325@gmail.com) by 21<sup>st</sup> of August and if you can keep your article to less than 120 words that would help enormously. Thank you.**

Please Note: The opinions expressed by authors of articles in 'A Slice of Suffolk' are entirely those of the authors and do not necessarily reflect those of the editorial team. 'A Slice of Suffolk' magazine is not liable for the accuracy of the information provided or responsible for any use of the content. Thank you.

Thank you to all our supportive advertisers. 'A Slice of Suffolk' magazine is run and produced by a small group of volunteers for seven parishes, Brandeston, Kettleburgh, Easton, Parham, Hacheston, Marlesford and Campsea Ashe.

**To take advantage of this fantastic local reach please contact Nan Waterfall to place an advert in 'A Slice of Suffolk' magazine email: [nanwaterfall@gmail.com](mailto:nanwaterfall@gmail.com)**

'the best farm cafe  
i've been to by a  
country mile'  
independent  
on sunday

## farm cafe+shop

marlesford

'a roadside caff  
that takes its food  
very seriously'  
jay rayner,  
the observer

**Made by Us -  
From the freezer**



Stock-up on our freshly  
cooked ready-meals  
and pies.

Fabulous vegetarian & vegan  
options always available



**eat  
fresh,  
eat  
local**



You can now tuck into  
our full menu of locally  
sourced, freshly cooked food  
everyday until 4pm.

**Breakfast,  
Brunch,  
Lunch and  
Afternoon  
Tea**

Check out our  
shop - you may  
be surprised.



[www.farmcafe.co.uk](http://www.farmcafe.co.uk)

local and free range produce since 2001

Instagram: [farmcafe\\_shop](#)

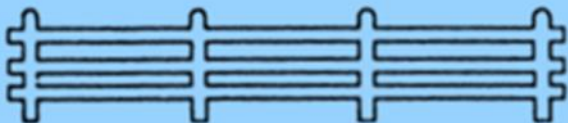
Main Road (A12), Marlesford, Woodbridge IP13 0AG Tel. 01728 747 717

## Country Care

*Fencing*

*Tree Work*

*Firewood*



Telephone 01728 747474